

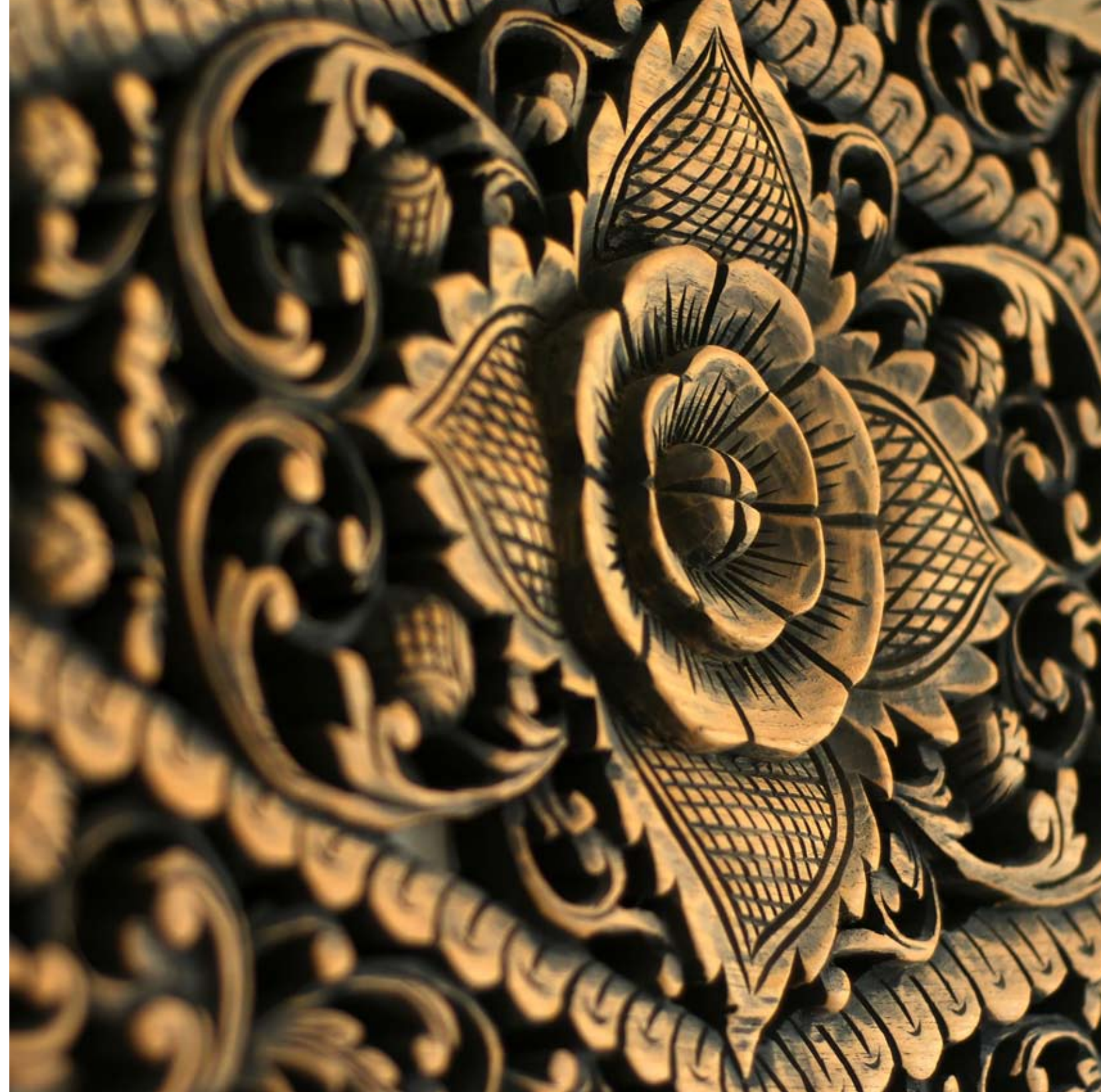
wts design
Building better lifestyles.®

wts INTERNATIONAL

© 2009 WTS INTERNATIONAL, INC. ALL RIGHTS RESERVED.

“It’s the little details that are vital. Little things make big things happen.”

JOHN WOODEN





SERVICES OVERVIEW

For over three decades, WTS International has served clients as a leisure facility consultant and management firm. We provide planning and design consultation for spas, fitness/wellness centers, residential community clubhouses, athletic clubs, and many other types of leisure facilities worldwide.

These services include concept and theme development, space program, schematic design and equipment specifications. Our design group impacts all areas of facility design including locker rooms, administrative area layout, spa treatment rooms, reception area, retail, mechanical and electrical specifications in all areas related to the design for the facility.

The WTS design studio has worked with numerous architecture firms, general contractors, and interior designers to develop the most esthetically pleasing, functional, and cost-effective space for each spa or leisure complex. It is critical to produce a visually appealing spa design, but it is equally important to design for functionality and cost efficiency. The guest or member experience should be memorable from a design perspective, but every space should also be planned to produce operational and financial success.

PROGRAMMING/CONCEPTUAL

THEME DEVELOPMENT

SCHEMATIC

DESIGN DEVELOPMENT

CONSTRUCTION DOCUMENTS

CLIENT LIST

CASE STUDIES

CONCEPTION

The starting point for any leisure project can often be the most difficult. WTS can help to develop a delineative spa theme, story or brand upon which design and operations are based.

VIABILITY

To develop a spa or fitness center without first knowing whether it is viable isn't the best course. WTS assists owners/developers in first determining the most appropriate size, scope and feasibility for the spa or leisure facility.

PLANNING

Careful planning and preparation are crucial to the successful design and launch of a spa or fitness facility. With our extensive experience in planning/design and in pre-opening and management, WTS is able to realize our client's vision.

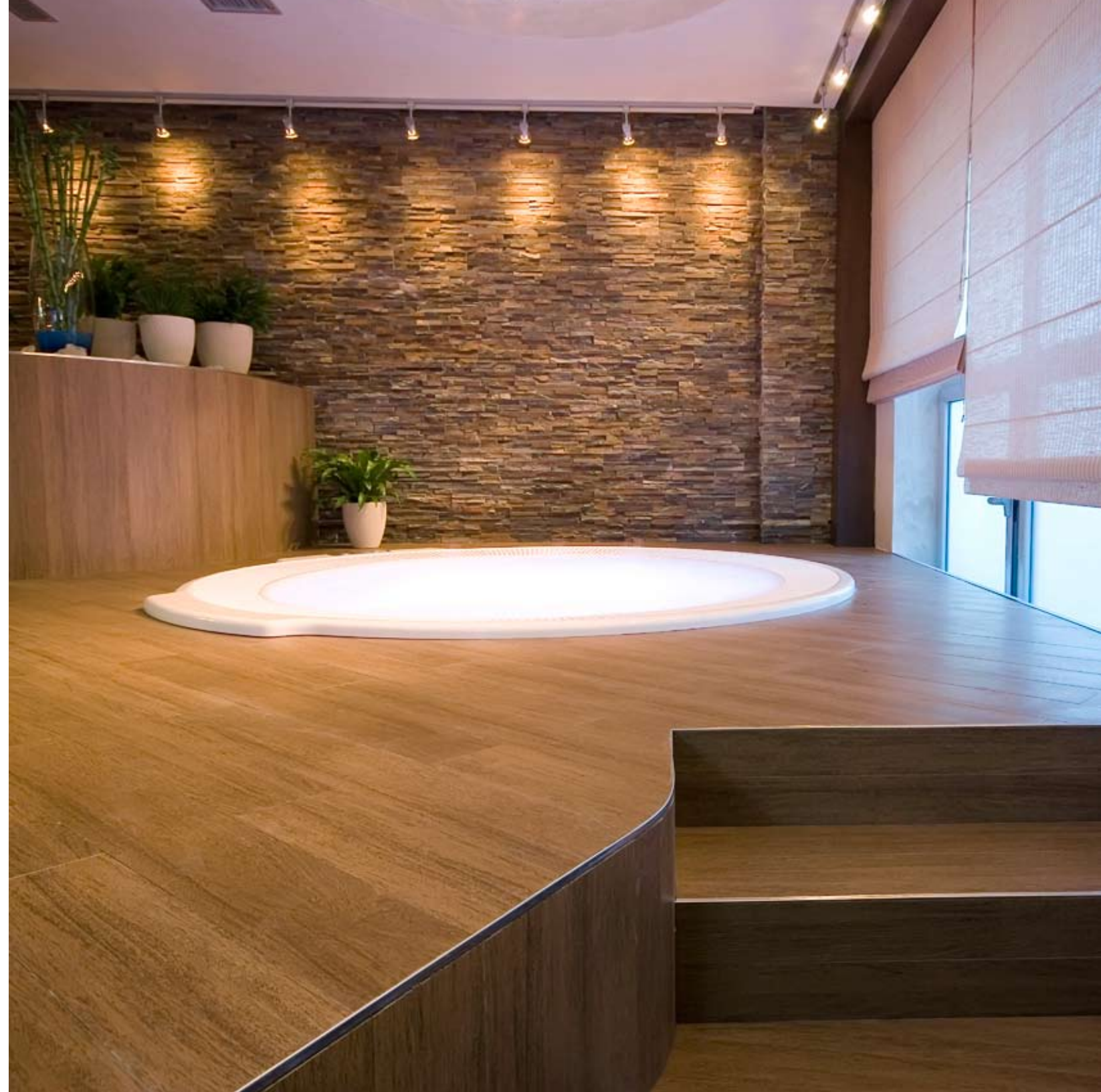
ACTUALITY

Imagination and vision become reality. WTS provides spa and leisure consulting and management services for clients throughout the world. Our goal is to create memorable experiences for our spa patrons, members and guests and to create positive financial and operational results for our clients.



PROGRAMMING/CONCEPTUAL DESIGN

Our priority at the outset of each project is to understand the client's desires, influences and vision with regard to the outcome of the project. This is accomplished through extensive discussions with our client, their architect, interior designers and other members of the project team. A preliminary direction, timeline and style are identified. The space program is then developed along with inspiration imagery boards and a conceptual layout plan indicating primary space locations, adjacencies and interactions.





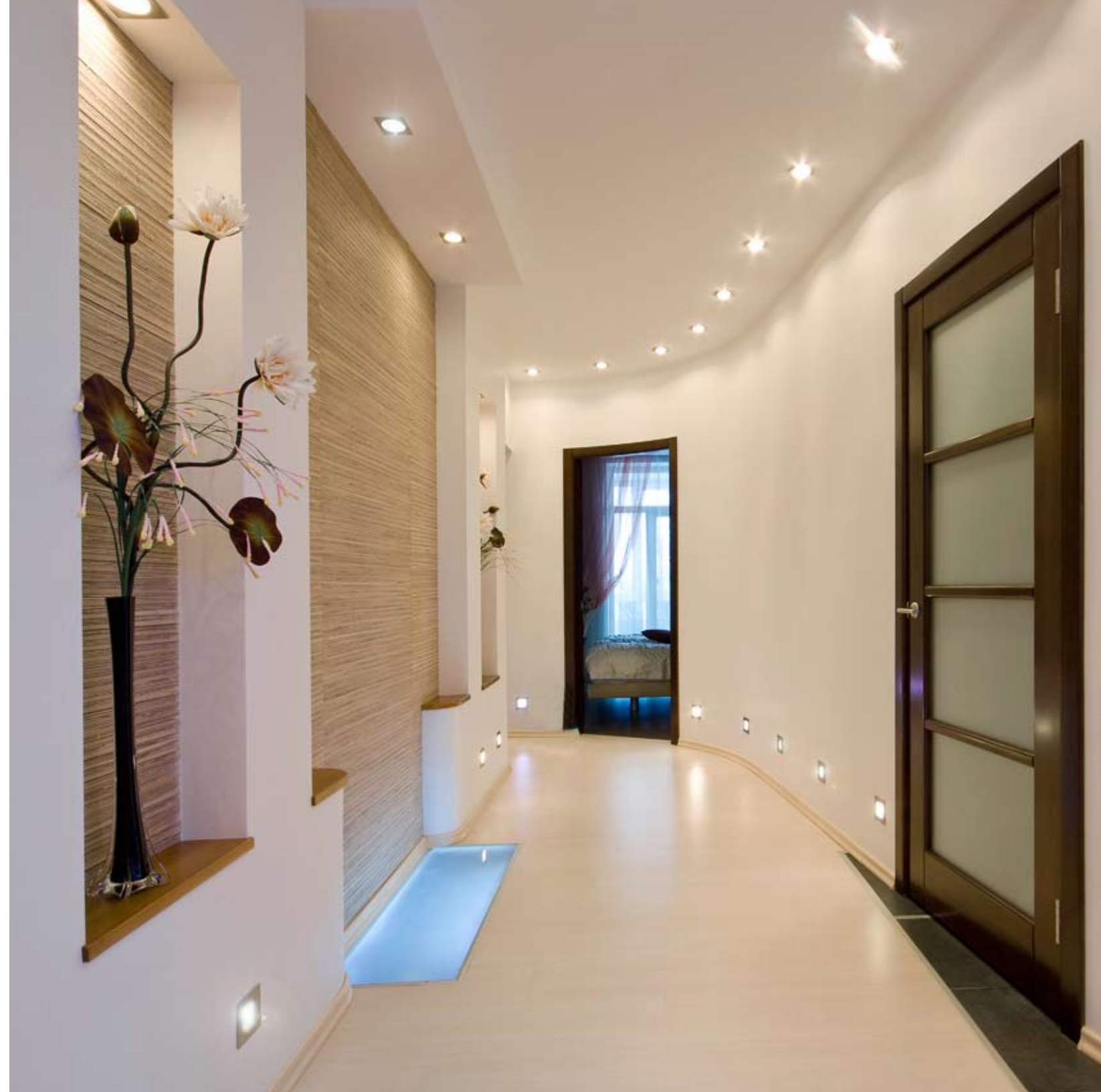
THEME DEVELOPMENT

We believe that spas should be grounded in a theme which is both authentic and unique to the particular site locale and is appealing to the user population. WTS develops comprehensive themes, or “stories,” that describe the consumer experience. Each theme focuses on how the spa experience will be memorable to the guest.

In theme development, WTS conducts extensive market research along with a study of regional influences, local customs, historical anthropological and cultural elements. These, along with a thorough analysis of the host property’s image and competitive strengths are the building blocks from which each distinctive spa theme is built. Ultimately, the theme is comprised of unique design features, service protocols and standards as well as “signature” elements which become the platform from which a memorable spa experience is delivered.

SCHEMATIC DESIGN

Based on feedback from the theme development and working closely with our client to ensure that all requirements are met, WTS then refines the selected plan and develops preliminary equipment layouts along with mechanical and electrical specifications. During this stage, WTS begins coordinating this work with MEP, structural and other consultants or project team members.





DESIGN DEVELOPMENT

By working closely with our clients, their architecture firm and interior designer, WTS is able to assist in the development of the initial conceptual plan. Our contributions include detailed equipment layouts for all treatment and support areas, complete equipment specification books for both spa and fitness areas, equipment specifications for administrative and support equipment and elevations and sections for specialized millwork and cabinetry. Throughout the design development process, WTS coordinates and consults with the project team.

CONSTRUCTION DOCUMENTS

WTS will verify adherence to the primary design intent through careful review of construction documents and provide written comments, redlines and sketches as necessary. WTS will also provide final price quotations for all specialized spa & fitness equipment. During construction, we do site inspections at key junctures in the process to ensure that the final result is both esthetically appealing and operationally functional.





“Recognizing the need is the primary condition for design.”

CHARLES EAMES

CLIENT LIST

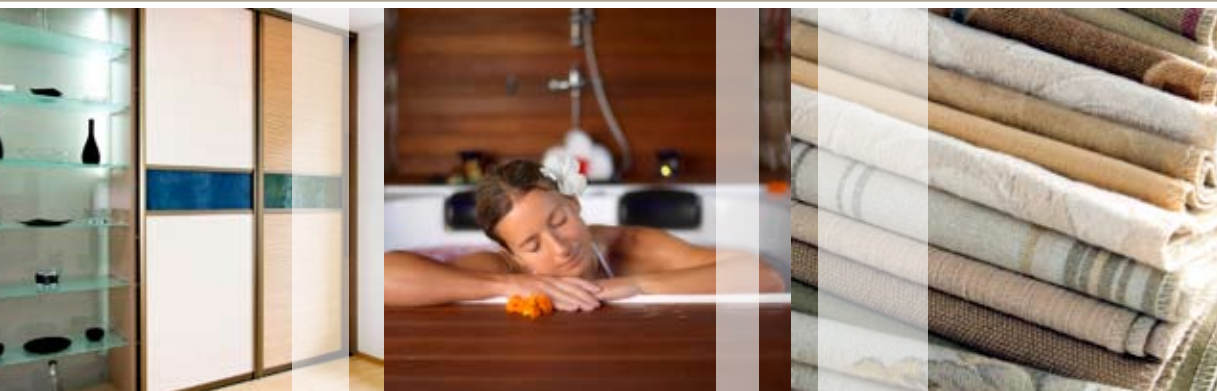
Battery Wharf Waterfront Residences & Hotel	Boston, Massachusetts	18,000 sq. ft.
Bellevue Biltmore Resort	Clearwater, Florida	24,000 sq. ft.
Ravallo Resort & Conference Center	Orlando, Florida	16,000 sq. ft.
Greystone Hotel	Miami Beach, Florida	18,000 sq. ft.
Trump SoHo Condominium	New York, New York	10,000 sq. ft.
Trump International Hotel & Tower	Waikiki Honolulu, Hawaii	3,000 sq. ft.
Trump International Hotel & Tower Ft. Lauderdale	Ft. Lauderdale, Florida	3,000 sq. ft.
Wyndham Bonnet Creek Resort	Orlando, Florida	8,000 sq. ft.
Treviso Bay	Naples, Florida	35,000 sq. ft.
Old Waverly Golf Club	West Point, Mississippi	9,000 sq. ft.
Wequassett Resort and Golf Club	Chatham, Massachusetts	10,000 sq. ft.
Woodstock Inn & Resort	Woodstock, Vermont	8,000 sq. ft.
Kingston Plantation	Myrtle Beach, South Carolina	12,000 sq. ft.
Innisbrook Resort and Golf Club	Palm Harbor, Florida	12,000 sq. ft.
Ocean House	Watch Hill, Rhode Island	8,000 sq. ft.
Trump Ocean Club International Hotel & Tower	Panama City, Panama	13,000 sq. ft.
The Summit Golf Club	Panama City, Panama	7,500 sq. ft.
Al Habtoor Grand Palm Resort and Spa	Palm Jumeirah, Dubai	13,000 sq. ft.
Al Hokair Spa	Dammam, Saudi Arabia	7,500 sq. ft.
Belek Golf Club & Residences	Antalya, Turkey	14,000 sq. ft.
Punta Vista Signature Residences	Punta de Mita, Mexico	15,000 sq. ft.
Wyndham Green Village at Cap Cana	Cap Cana, Dominican Republic	12,000 sq. ft.
Trump International Hotel & Tower Toronto	Toronto, Ontario	6,000 sq. ft.
The Spa of Colonial Williamsburg	Williamsburg, Virginia	19,000 sq. ft.
theWit Hotel	Chicago, Illinois	3,500 sq. ft.
The East Hotel	Abu Dhabi, UAE	9,000 sq. ft.
The Reef Tower	Dubai, UAE	9,000 sq. ft.
Hard Rock Hotels Rock Spas	Worldwide	Theme Development
Wyndham Hotels & Resorts Blue Harmony Spas	Worldwide	Theme Development





“Good design begins with honesty, asks tough questions, comes from collaboration and from trusting your intuition.”

FREEMAN THOMAS



WTS INTERNATIONAL

Building better lifestyles.™

3200 Tower Oaks Boulevard, Suite 400
Rockville, MD 20852

301 622 7800
www.wtsinternational.com

